



# GAT MONTHLY MEMBERSHIP PROGRESS REPORT

Results as of: 3/31/2023

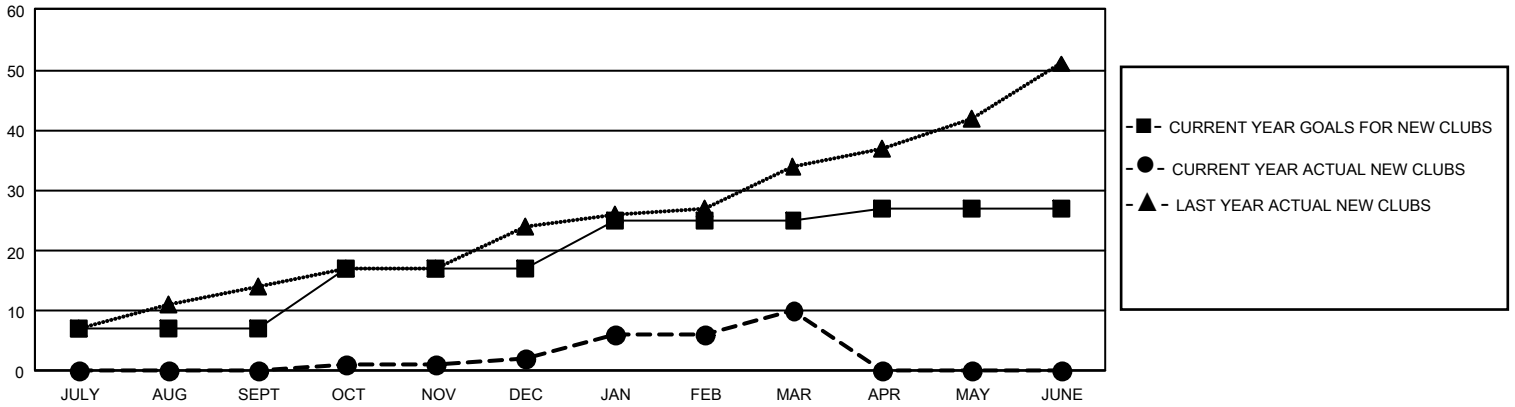
## GMT Constitutional Area 8, Group A

REPORT DOES NOT INCLUDE CLUBS IN UNDISTRICTED AREAS.

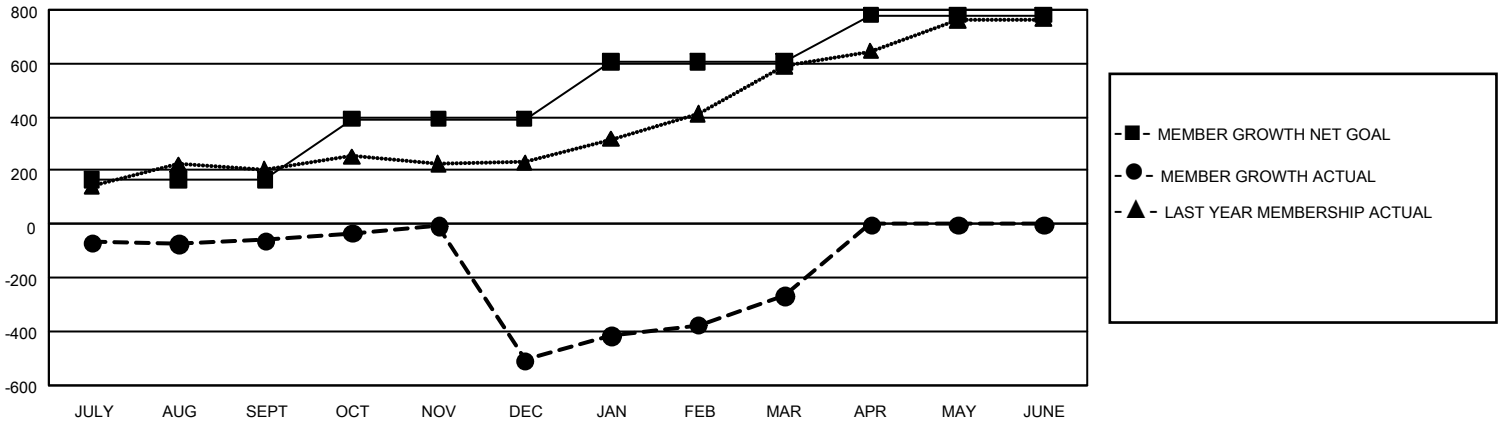
Clubs			
RESULTS FOR 2022-2023			
QUARTER	NEW CLUB GOAL	NEW CLUBS	DROPPED CLUBS
JULY/AUG/SEPT	21	0	2
OCT/NOV/DEC	30	2	15
JAN/FEB/MAR	24	8	2
APR/MAY/JUNE	6	0	0

Members			
RESULTS FOR 2022-2023			
QUARTER	MEMBER GROWTH NET GOAL	MEMBER GROWTH ACTUAL	DROPPED MEMBERS ACTUAL (including transfers)
JULY/AUG/SEPT	167	191	228
OCT/NOV/DEC	225	236	676
JAN/FEB/MAR	215	448	171
APR/MAY/JUNE	174	0	0

GOALS AND ACTUAL NEW CLUBS CUMULATIVE



GOALS AND ACTUAL MEMBERS CUMULATIVE



<b>DROPPED CLUBS: 19</b>	187 CLUBS OF 401 ADDED 1 OR MORE NEW MEMBERS	<b>GENDER DISTRIBUTION</b>	
		MALE 6,297 (70.16%) FEMALE 2,676 (29.82%) NON BINARY 0 (0.00%) PREFER NOT TO ANSWER 2 (0.02%)	
<b>DROPPED MEMBERS</b>		<a href="#">CLICK HERE FOR CUMULATIVE MEMBERSHIP DATA</a>	
DECEASED 29 CLUB CANCELLED 374 OTHER 672 <b>TOTAL 1,075</b>	TOTAL FAMILY UNIT MEMBERS 200 FAMILY MEMBERS PAYING HALF DUES 106		